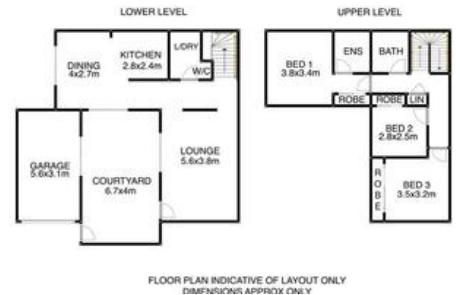




**Unit 62, 61 Harburg Dr, Beenleigh**



### Townhouse Opportunity

This is your opportunity to secure a home in the popular complex, Four Corners at Willow Park - Beenleigh's hidden gem. A secure, gated complex with everything you could ask for. The town houses offer spacious and stylish living with plenty of room for the family indoors and out. Currently tenanted this property would be suitable for the investor or arrangements could be made if you would like to move in. You're welcomed into the home through the courtyard, leading to a large living area, following through to a separate kitchen and dining space with a private aspect looking out to the courtyard from both living and dining areas. Internal access to the single garage and separate laundry are found on this level, along with convenient downstairs toilet. Upstairs, you'll find three good size built in bedrooms and a family bathroom with the master bedroom boasting a full ensuite. Currently tenanted at \$305pw. These great design townhouses are popular so call now. As a minimum 24 hours' notice is required for the tenant, please contact me early to arrange your inspection.

The above information provided has been furnished to us by the vendor/s. We have not verified whether or not that information is accurate and do not have any belief in one way or the other in its accuracy. We do not accept any responsibility to any person for its accuracy and do no more than pass it on. All interested parties should make and rely upon their own inquiries in order to determine whether or not this information is in fact accurate.

3 1 1

**Price** SOLD  
**Property Type** residential  
**Property ID** 1074

**Agent Details**  
 Faye Wilson - 0407649178

**Office Details**  
 62-66 Beenleigh Redland Bay Rd  
 Loganholme QLD 4129 Australia  
 07 3333 2235

